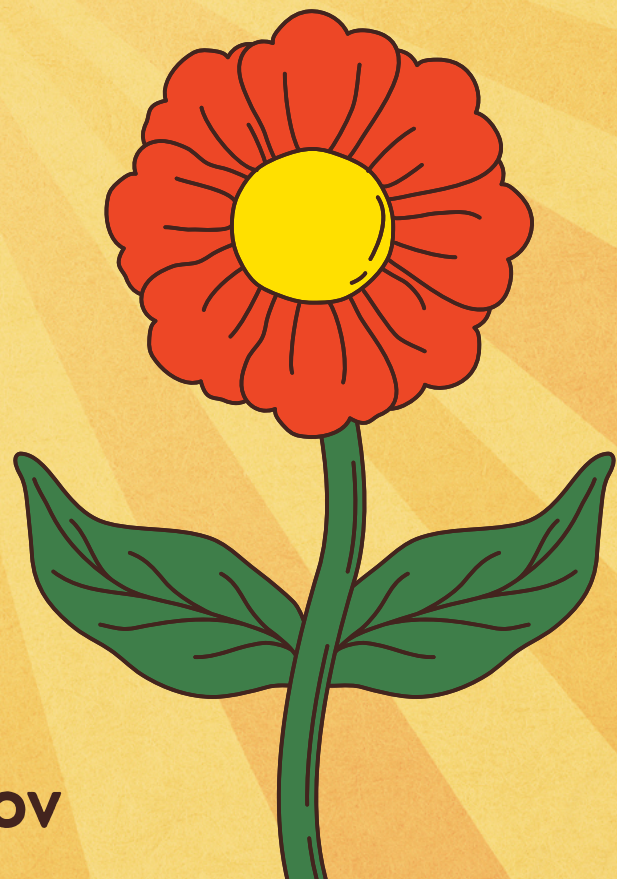




**CITY OF BANGOR
PARKS & RECREATION**

**TEEN X-TREME TRAVEL CAMP
PARENT HANDBOOK**

2025



**KARISSA HATCH
RECREATION COORDINATOR
207-992-4490
KARISSA.HATCH@BANGORMAINE.GOV**

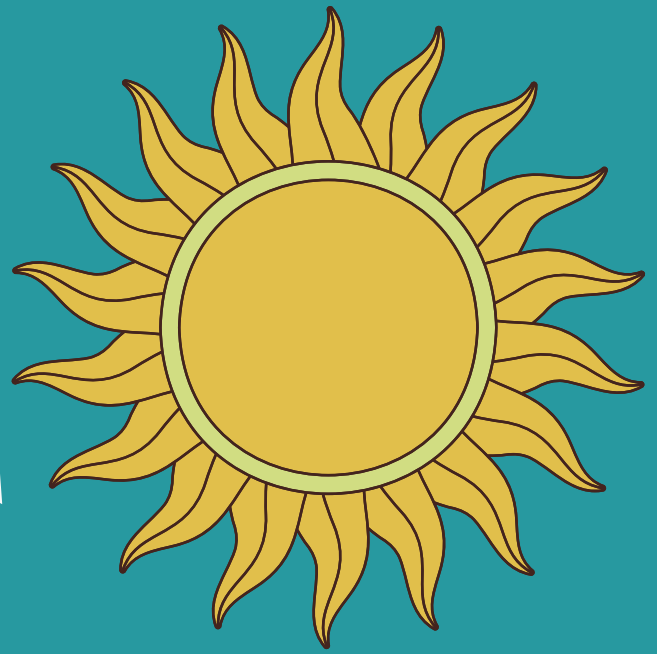
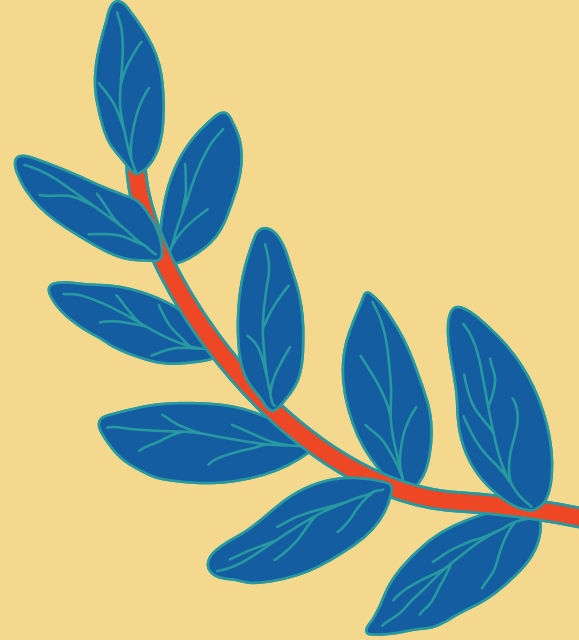


Table Of Contents

- Welcome Message
- Fees & Registration
- Cancellations & Refunds
- Camp Details & Information
- Field Trips & Activities
- Health Policies
- Behavior & Dismissal



Welcome Message



Welcome Parents & Guardians,

We are excited to have your child attend our Teen X-treme Travel camp this year! Our goal here at Bangor Parks & Recreation is to provide your teens with an exciting, safe, summer travel camp for 8 weeks. We will explore fun local activities in the Eastern Maine area and introduce teens to the wide variety of low cost, fun things to do in our backyard! We also take weekly excursions to further parts of our beautiful state to discover new places and thrilling attractions!

If you have any questions regarding this year's Teen X-treme Camp, please email:

karissa.hatch@bangormaine.gov

Karissa Hatch
Recreation Coordinator

Registrations & Fees



Registrations:

Register online at bangorparcsandrec.com via your Myrec account or in person at the Bangor Parks & Recreation Center located at: 647 Main Street, Bangor

Cost Per Week:

Bangor Residents - \$180.00 (\$20 Deposit)

Non - Residents - \$195.00 (\$20 Deposit)

(Cost includes all field trips and transportation - does NOT include spending money and lunches)

Payment Options:

PAYMENT PLANS - You will input credit card information after selecting your registration schedule. Your credit card will be automatically billed consecutively every Sunday until full balance is paid off (regardless of registration schedule).

Registrants with a past due account balance may NOT attend camp. Past due balances MUST be paid to attend camp!

Cancellation Policy



Cancellations:

- Automatic \$20 Cancellation Fee for each week cancelled
- Bangor Parks and Recreation requires a two-week notice for all Summer Camp cancellations due to limited spots
- A cancellation form must be filled out on our website & Bangor Parks and Recreation **MUST** receive notification of cancellation form via email or phone call, in order for weeks to be cancelled
- If the cancellation is received without a two-week notice, you will be required to pay for those weeks
- [CANCELLATION FORM](#)

Camp Details

Camp Dates:

- Monday, June 23rd - Wednesday, August 13th
- Camp operates Monday, Tuesday & Wednesday
- Camp based out of Johnson Gym at EMCC
(Eastern Maine Community College)
- Drop-off 7:45AM - Pick-up 5:00PM
(On non-field trip days drop off between 7:45AM - 9:00AM)
(Subject to change based on travel details)
- All teens must be signed in at drop-off
- All teens must be signed out at pick-up by a parent / guardian.
We will not release your teen to anyone who is not authorized
on your pick-up list
- Two local trips & one travel excursion per week
- Field trip transportation provided via two 12-15 passenger vans

What to Bring:

- Water bottle
- A lunch & drink (NO GLASS)
- Snacks
- Sneakers
- Bathing suit & towel (plastic bag for wet clothes)
- Insect repellent
- Sunscreen
- Hat & sunglasses
- Extra warm clothing
- Rain clothes (for unexpected weather)
- Cell phones are welcomed especially for communication with
parents, but teens will be asked to put phones away during
activities
- **DO NOT BRING WEAPONS OF ANY KIND!**



Field Trips



Local Activities

- Swimming at Pancoe Pool
- Local state parks & Beaches
- Mini golf & Disc golf
- Outdoor activities
- MUCH more!

(ALL ACTIVITIES SUBJECT TO CHANGE)

Travel Excursions

- Old Orchard Beach
- Funtown Splashtown
- Botanical Gardens
- Acadia National Park
- MUCH more!

(ALL TRAVEL EXCURSIONS SUBJECT TO CHANGE)

For some field trips we will leave as early as 7:30 am and may return as late as 6:30 pm (all times will be communicated via email). A full schedule of departure times will be made available to parents at the beginning of the week. All children must be at camp and ready to go at assigned times. There will be no staff for any child arriving after our departure.





Field Trips Cont.



Supervision Disclaimer

For many trips, campers may be teamed up into small groups and will be able to explore and have fun with limited counselor supervision. Campers will be reminded to stay together and to report back at certain times and locations. Campers will also have access to call the camp cell phone at any time. IF you would like your child to remain in counselor supervision, please let us know so that we can accommodate. We want to promote independence for the children, while also providing a safe environment for them to enjoy.





Health Policies

Medications

- Please communicate with camp counselors if your child has medications.
- Bangor Parks and Recreation will not be responsible for the administration of medications to teens.
- A parent or legal guardian must complete and return the medication consent form in order to permit the use of any medication. A form will be filled out for each individual medication.
- Please only provide daily dosages for medications, not full bottles of medications.
- Teens will be responsible for administering their own medications.

Medical Conditions & Allergies

Please let us know of any medical conditions or allergies your child may have to ensure we are delivering the best care.

DUE TO SEVERE PEANUT ALLERGIES, WE STRONGLY DISCOURAGE SENDING LUNCHES OR SNACKS THAT CONTAIN PEANUTS.

Illness and Injury

For the safety of all program participants, we reserve the right to send your child home if he/she becomes ill. We will notify you if your child:

- Has a fever
- Is vomiting
- Has a rash
- Has an earache
- Has live lice or evidence of bedbugs or flea bites
- Experiences uncontrolled coughing, persistent crying, or difficulty breathing

(If parent is notified of illness or injury, child **MUST** be picked up within a reasonable amount of time)



Behavior & Dismissal

Behavior



Bangor Parks and Recreation values the importance of promoting positive behavior and appropriate methods of behavior management within the program setting. All children have the right to expect positive approaches to behavior management which will foster self-esteem, respect, tolerance, and self-control. Specific behaviors that are emotionally and/or physically damaging to individuals and/or property are real challenges for adults/staff and the other children and therefore must be dealt with in an appropriate manner. By encouraging these values Bangor Parks and Recreation will aspire to ensure all participants feel safe, have fair opportunities and are considerate to all. Behavior which seriously interferes with a positive program experience for other participants may result in dismissal and/or suspension from the program. Bullying, teasing, verbal, and physical misconduct are not tolerated.

Physical Contact

Appropriate physical contact includes high-fives, fist-bumps, handshakes, and hugs when asked. Unwanted or inappropriate touch is not tolerated.

Physical Misconduct

Physical misconduct, including but not limited to: violent outbursts, hitting, punching, kicking, slapping, biting, throwing, or any other physical aggression toward staff or other children is not tolerated. For the safety of our participants, instances of physical misconduct will result in immediate dismissal for the day.



Behavior & Dismissal Cont.

Verbal Misconduct

Any use of violent, inappropriate or suggestive language including threats, teasing, or bullying is not tolerated. Verbal misconduct may be grounds for dismissal.

Verbal Threats

Any threats of life to a child or staff member will result in immediate suspension. Child will be able to return once a plan is determined by staff and parents.

Suspension and Dismissal

We reserve the right to dismiss and/or suspend your child from the programs in the following situations:

- Failure to pay for service.
 - Your child is picked up late more than three times
 - Required forms are not completed
 - Repeated unsafe behaviors
 - Physical Misconduct
 - Continued disruptive behavior by the child after the parents/guardians have been consulted and appropriate measures have been taken to change such behavior.
 - IMMEDIATE suspension and/or dismissal may occur in extreme situations.
 - Failure to comply with program policies and expectations
- **Refunds will not be given for suspensions or dismissals for that current week.****